

1	2	3	4	5	6	7	8	T	X
								0	5.00

End 1.

Mary Turtle

Lead's first stone.

Shot	
Hits	Draw
Draws	Come Around
Guards	Tap Up
Other	Freeze

Turn

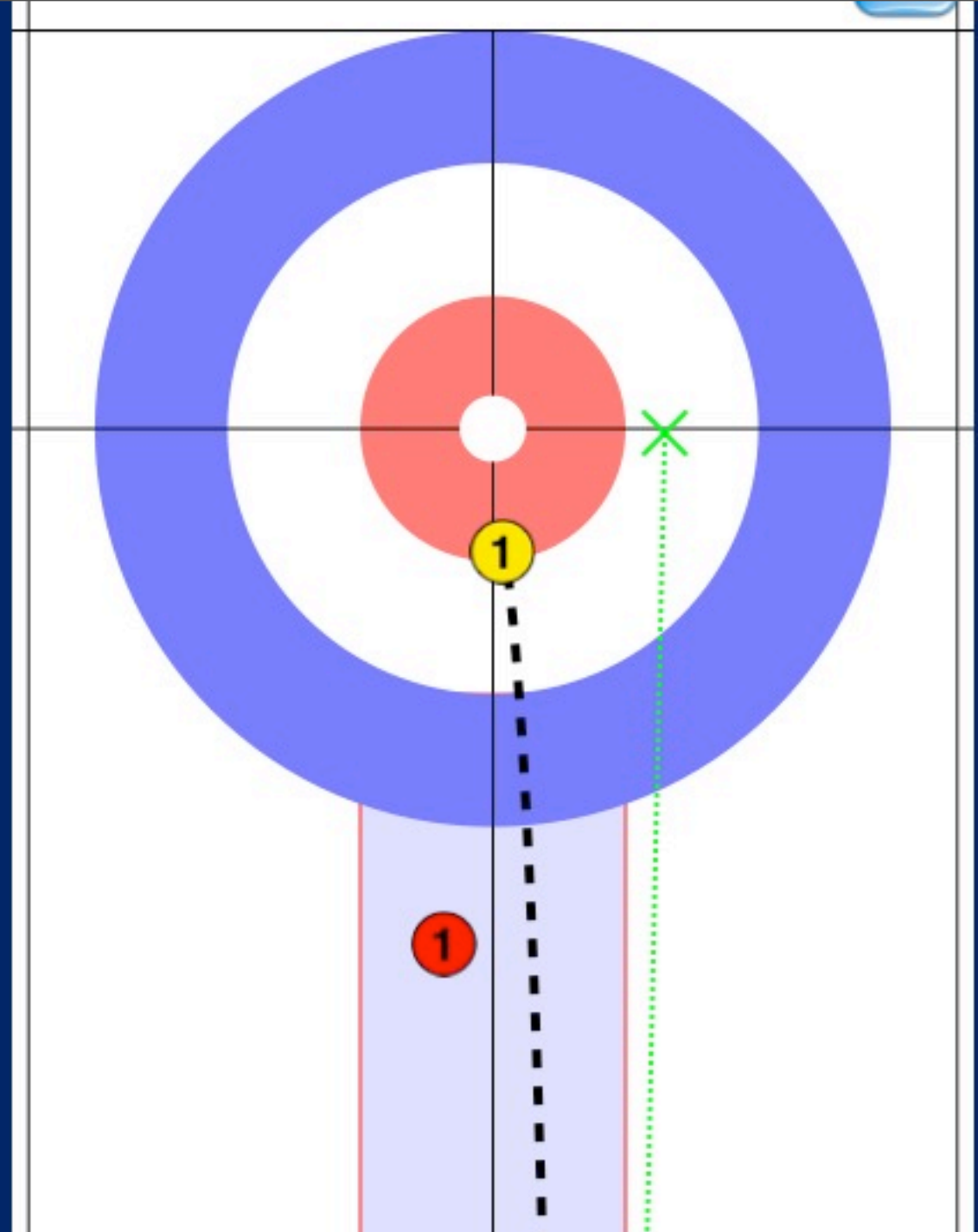
In Out

Difficulty

1 2 3 4

Score (%)

0 25 50 75 100 125



CHARTING

The Value of Statistics in Team Development.

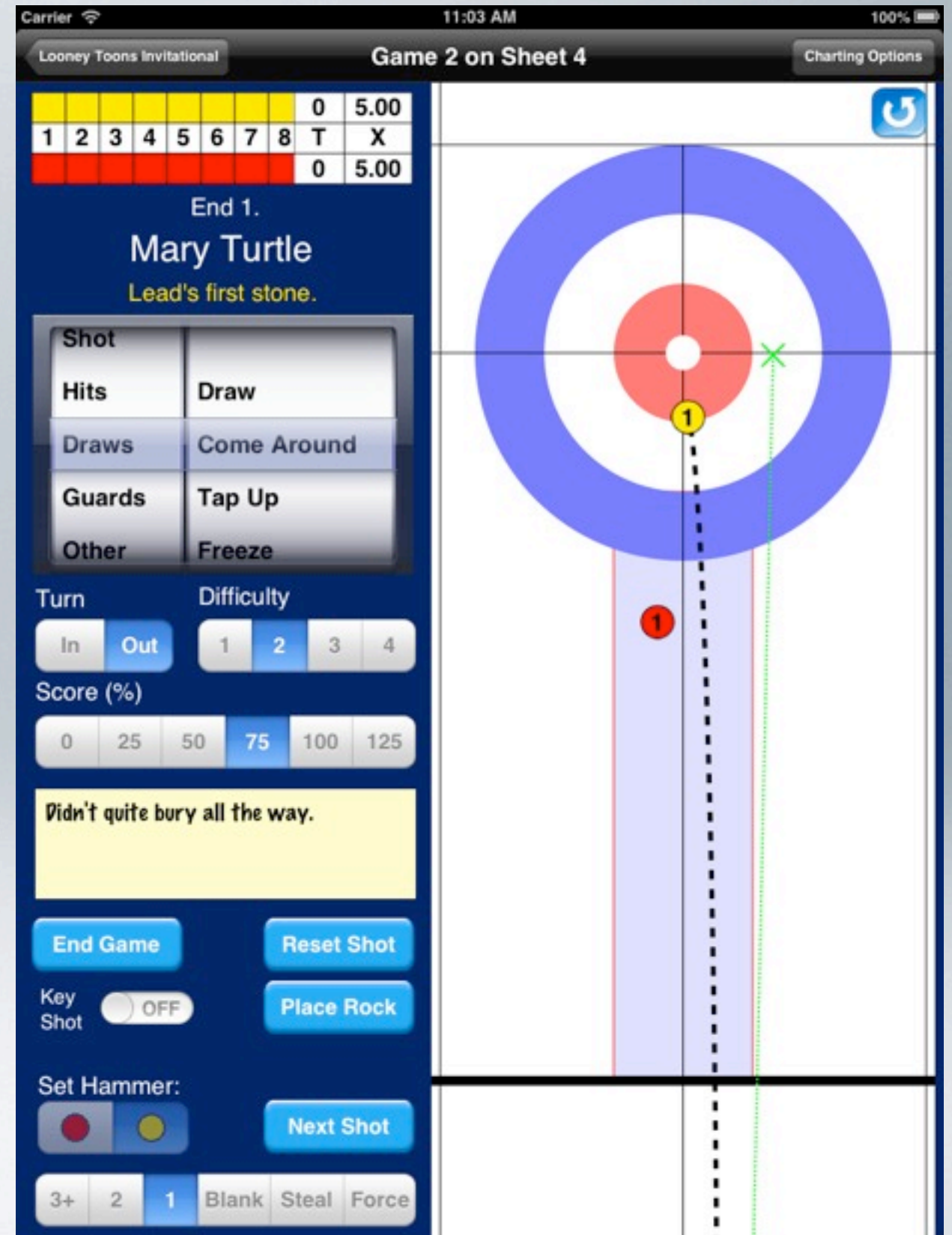
WHY ARE STATS USEFUL?

- Identify strengths and weaknesses in your team.
 - Select drills to counter weaknesses.
 - Develop strategies that leverage strengths.
- Identify tendencies in shot selection.
- Compare performance against opposition teams.
- Target feedback against what the team is actually doing.
- Watch trends over an entire season or multiple seasons.

CURL COACH

The Easiest Way to Chart

- Simple touch based interface for placing the broom and moving rocks.
- Automatic selection of shot difficulty and turn.
- Detailed reason for a miss.
- Access to player, shot & venue notes.
- Developed with input from curling coaches



CURL COACH

Powerful Replay

- Fully animated - see the rocks as they moved.
- Quickly replay a game and discuss
 - what went well
 - what went wrong
- Removes the guesswork of hand sketches.
- Extract relevant situations to the Strategy Book

The screenshot displays the 'Replay Game' interface for 'Game 2 on Sheet 0'. The top status bar shows 'Carrier', '10:39 AM', and '100%' battery. The app title 'Curl Coach' is partially visible on the left. The main interface is split into a left sidebar and a right main area.

Left Sidebar:

- Scoreboard: A table with columns 1-6 and scores. The top row (red) has scores 0 and 5.00. The bottom row (blue) has scores 0 and 5.00.
- End 1. Hammer Conner Orr
- Vice's final stone.
- In-turn Hit & Stick Score: 50 % Difficulty: 4
- A large yellow sticky note area.
- Navigation controls: Play/Pause, Previous, Next, and Stop buttons.
- Buttons: 'Edit Shot' and 'Strategy Book'.

Main Area:

- A circular target diagram with concentric rings (red center, white middle, blue outer).
- Numbered stones (1-6) are placed around the target.
- A green dashed line indicates the stone's path from the bottom towards the center.
- A red 'X' marks the stone's final position in the center.
- A blue dashed line shows a stone's path from the right side towards the center.

CURL COACH

Live Stats On-Demand

- During charting or during replay, instantly display the live stats for the game being charted.
- Compare your performance head-to-head with the opposition.

Carrier 1:24 PM 100%
East York Replay Game Replay Options

Game 1 on Sheet 0.

0	1							1	6.25
1	2	3	4	5	6			T	X
1	0							1	6.25

End 3.

Game 1 Shot Percentage for Minor League

	Lead		Second		Vice		Skip		Team	
	#	%	#	%	#	%	#	%	#	%
Hits	1	0.00	4	68.75	9	63.89	7	75.00	21	65.48
Draws	8	43.75	5	65.00	2	50.00	4	56.25	19	52.63
Guards	3	75.00	3	91.67	1	100.00	1	100.00	8	87.50

Total 48 charted with average 64.06 % (0 not charted)

Shot Percentage for the Opposition

	Lead		Second		Vice		Skip		Team	
	#	%	#	%	#	%	#	%	#	%
Hits	-	-	-	-	-	-	-	-	-	-
Draws	-	-	-	-	-	-	-	-	-	-
Guards	-	-	-	-	-	-	-	-	-	-

Total 0 charted with average 0.00 % (48 not charted)

Shot Percentages for Completed Ends

	59.38	59.38	81.25	65.62	68.75	50.00
End	1	2	3	4	5	6
Goals	No	Yes	No	No	No	No

Total 48 shots charted with average 64.06 % (0 not charted)

3

Edit Shot Strategy Book

CURL COACH

Talking Strategy

- Capture Strategic Situations from actual games, or create your own.
- Apply multiple tactical options, each with a broom, notes and rocks in motion.
- Full animated.
- Export the situation and all responses to PDF handouts.



CURL COACH

Detailed Reports

- Player, Team and Competition level reports.
- Shot making data analyzed in ways that help the coach target weaknesses.
- Objective and Subjective data.
 - Shot selection.
 - % by broom position, by turn, by difficulty.
 - Team and position data.

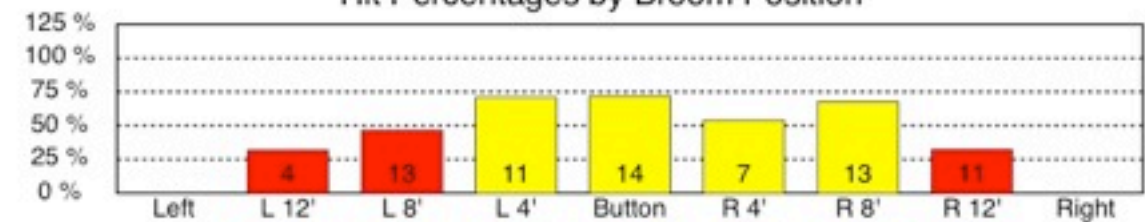
Shot Making Data

Team Shot Percentage for Minor League

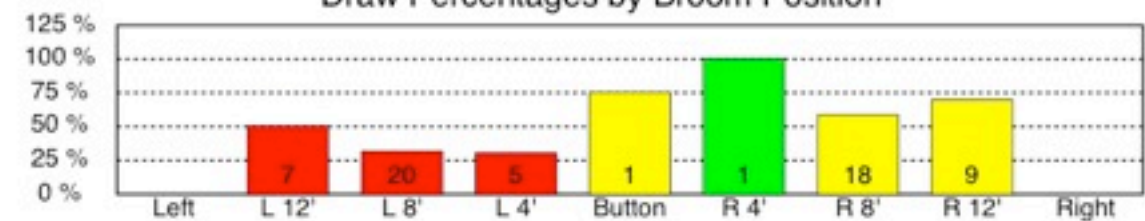
Percentages by Broom Position

	Left	L 12'	L 8'	L 4'	Button	R 4'	R 8'	R 12'	Right
	%	%	%	%	%	%	%	%	%
Hits	-	31.2	46.2	70.5	71.4	53.6	67.3	31.8	-
Draws	-	50.0	31.2	30.0	75.0	100.0	58.3	69.4	-
Guards	-	-	37.5	87.5	-	41.7	75.0	75.0	50.0

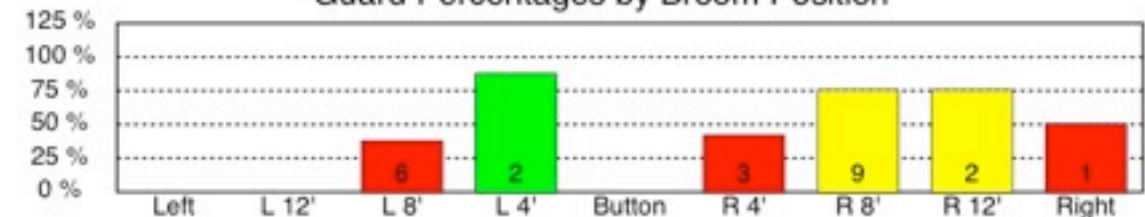
Hit Percentages by Broom Position



Draw Percentages by Broom Position



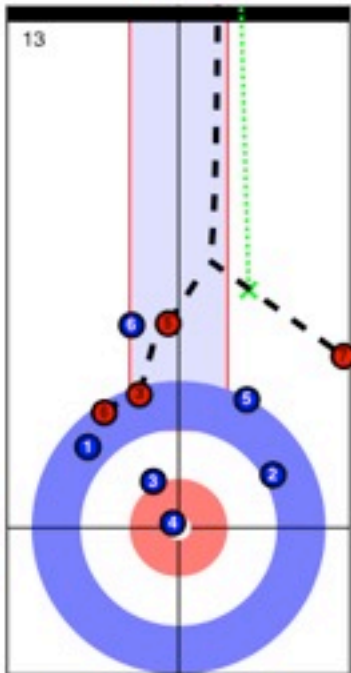
Guard Percentages by Broom Position



CURL COACH

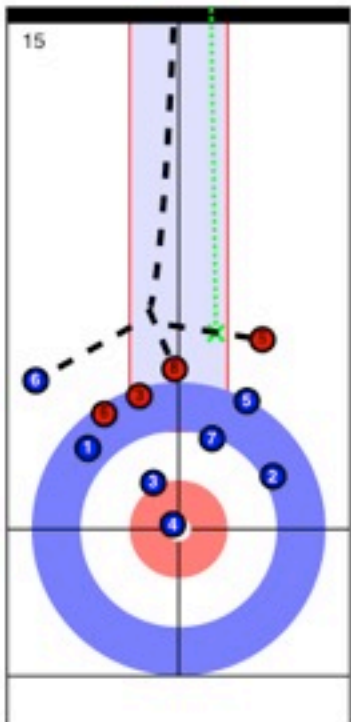
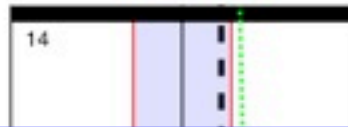
Sample Data

Skip's Rocks for End 4 in Game 2



Ben Minor
Out-turn Raise
Difficulty 2.
Score 50%.

Missed: Outside



Ben Minor
Out-turn Raise
Difficulty 3.
Score 0%.

Missed: Inside.

Shot Selection Data

Total: 224 shots

Type Counts

Hits 45.09 % (101)
Draws 38.39 % (86)
Guards 16.52 % (37)

Shot Counts

Hit & Stick 21.88 % (49)
Hit & Roll 13.39 % (30)
Double 1.79 % (4)
Peel 2.23 % (5)
Raise 5.80 % (13)
Tick 0.00 % (0)
Draw 23.21 % (52)
Come Around 7.59 % (17)
Tap Up 4.46 % (10)
Freeze 3.12 % (7)
Split On 0.00 % (0)
Free Guard 11.61 % (26)
Guard 4.91 % (11)
Throw Away 0.00 % (0)
Hit & Roll Away 0.00 % (0)
Run Back 0.00 % (0)

Average shot difficulty 2.96

7	Second	Not Selected			
---	--------	--------------	--	--	--

Shots for Game 2 on sheet 0

End 5 (continued)

#	Position	Shot	Score	Miss	Notes
8	Kirsten Olsen	Out-turn Hit & Stick	75%	Outside.	
9	Vice	Not Selected			
10	Conner Orr	Out-turn Peel	100%		
11	Vice	Not Selected			
12	Conner Orr	In-turn Peel	75%	Outside.	
13	Skip	Not Selected			
14	Ben Minor	In-turn Raise	100%		Lots of rocks on motion.
15	Skip	Not Selected			
16	Ben Minor	In-turn Raise	0%		Cut them down to 2. No good options..

End 6

#	Position	Shot	Score	Miss	Notes
1	Lead	Not Selected			
2	Claire Wallace	Out-turn Come Around	50%	Inside.	
3	Lead	Not Selected			
4	Claire Wallace	In-turn Come Around	0%	Heavy.	
5	Second	Not Selected			
6	Kirsten Olsen	Out-turn Freeze	50%	Light.	
7	Second	Not Selected			
8	Kirsten Olsen	In-turn Hit & Roll	0%	Light.	
9	Vice	Not Selected			
10	Conner Orr	Out-turn Raise	25%	Outside.	
11	Vice	Not Selected			
12	Conner Orr	Out-turn Raise	25%	Strategy too	
13	Skip	Not Selected			
14	Ben Minor	Out-turn Raise	0%	Strategy too	Shot not there.
15	Skip	Not Selected			
16	Ben Minor	In-turn Raise	75%	Inside.	Cut them down... Too little to late.

East York

Lead's Rocks

Minor League